

FOREST DRIVE MEDICAL OFFICE BUILDING

EXCLUSIVE LISTING | INVERNESS, FLORIDA

BANK OWNED

LOCATION SE corner of Forest Drive and Central Avenue, one block north of SR 44/Gulf to Lake Highway.

BUILDING SIZE 4,432 square feet

ASKING PRICE \$290,000 - **PRICE REDUCED!**

PARCEL 1689198

ZONING RO/RP, Residential Professional

DEMOGRAPHICS

	1 Mile	3 Miles	5 Miles
*2015 Population	±2,066	±15,006	±31,196
*2015 Total Households	977	6,629	13,976
*2015 Average HH Income	\$41,038	\$43,320	\$47,297

*2015 ESRI

COMMENTS

A two-story 4,432 square foot building, built in 1989 located at 2337 Forest Drive, Inverness, Citrus County, FL 34453. The building is vacant but was used as a medical office with two suites, with a shared hallway and a common lunchroom. The surrounding area is mainly a suburban mix of residential, office and retail commercial. There is adequate parking with concrete paving, striped spaces with stops.



Nancy Surak | nsurak@landadvisors.com

2202 N West Shore Blvd., Suite 200, Tampa, Florida 33607 ph. 813.448.1999 | www.landadvisors.com

The information contained herein is from sources deemed reliable. We have no reason to doubt its accuracy but do not guarantee it. It is the responsibility of the person reviewing this information to independently verify it. This package is subject to change, prior sale or complete withdrawal. FLCitrus177248 - 10.30.17

 Land Advisors[®]
ORGANIZATION

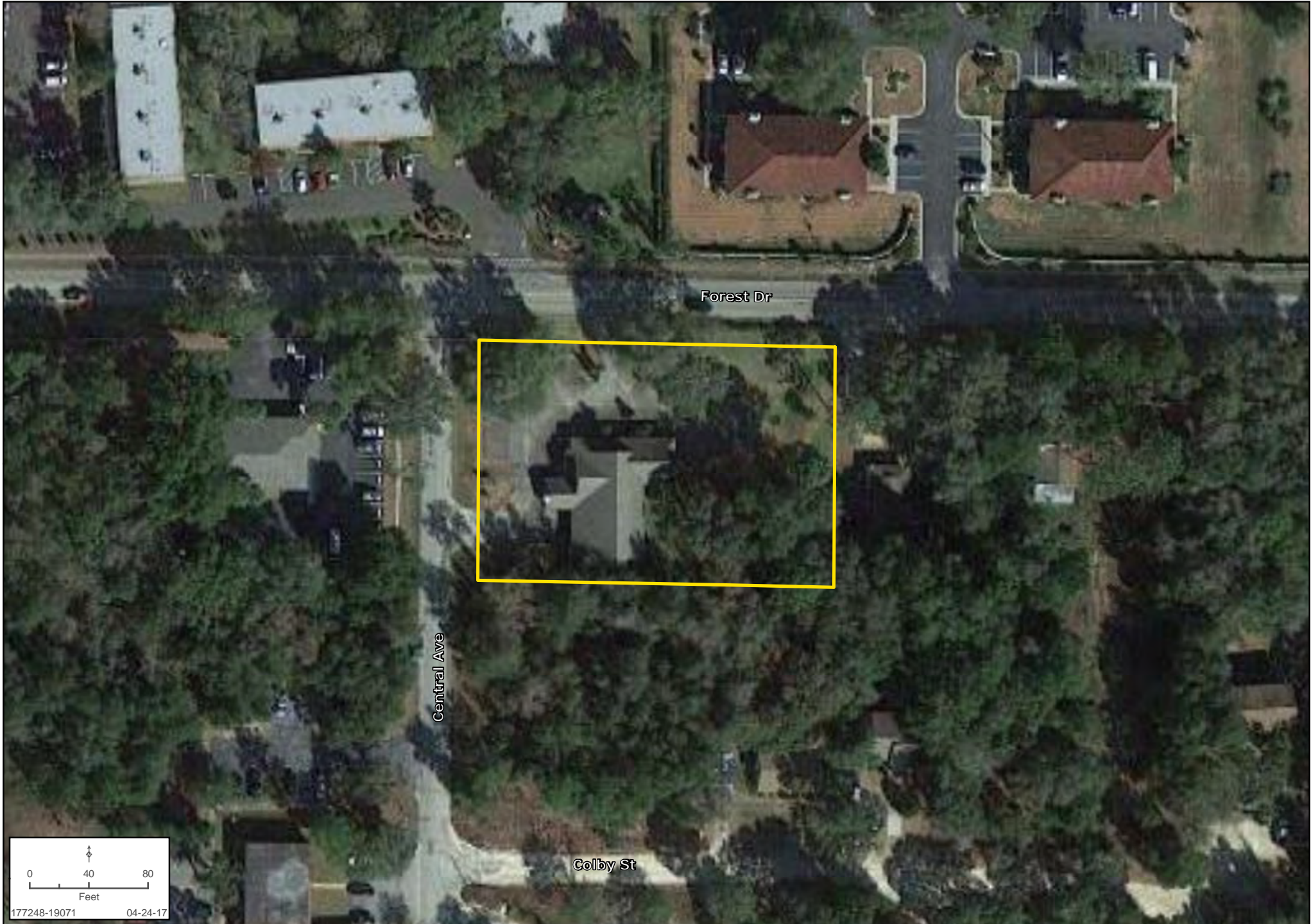
SURROUNDING AREA MAP

Nancy Surak | 813.448.1999 | www.landadvisors.com



PROPERTY DETAIL MAP

Nancy Surak | 813.448.1999 | www.landadvisors.com



FOREST DRIVE MEDICAL OFFICE BUILDING PROPERTY PHOTOS

