



Contact:

Kirk McCarville/KMcCarville@landadvisors.com

Bret Rinehart/BRinehart@landadvisors.com

Ryan Semro/RSemro@landadvisors.com

Office 480.483.8100/Fax 480.483.0000

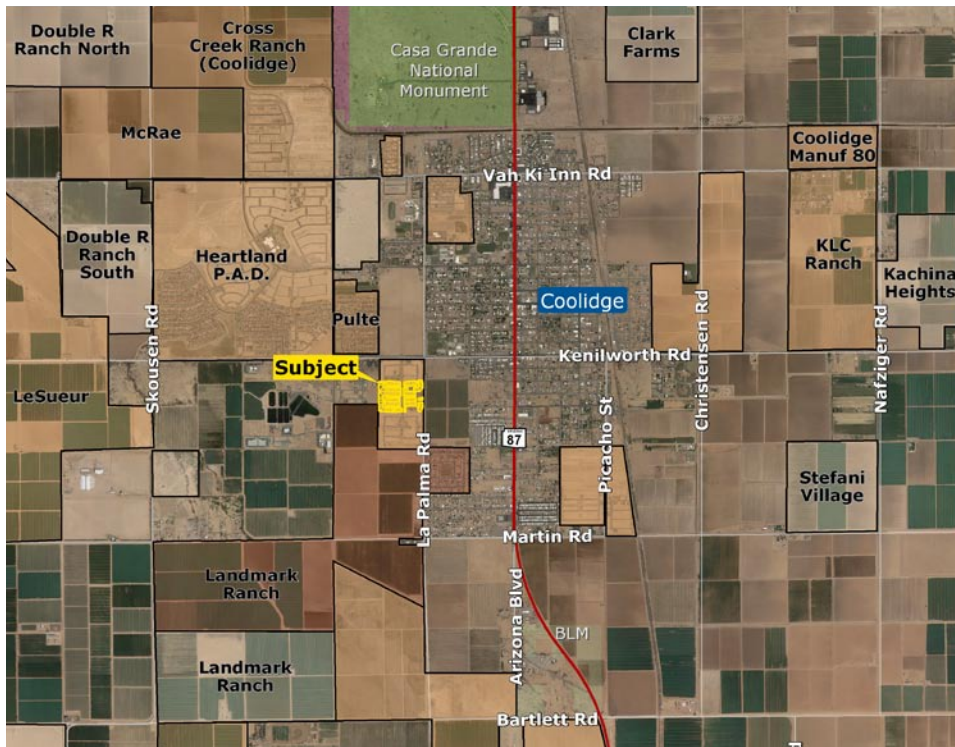
4900 N. Scottsdale Road, Suite 3000

Scottsdale, AZ 85251

www.landadvisors.com

McClellan Meadows

Coolidge, Arizona



Location: Property is located at SWC La Palma Road and Kenilworth Road in Coolidge, Arizona.

Lots: 93 - 45' x 115' finished lots

Price: Submit

Utilities:

Electric: APS

Telephone: Qwest

Cable: Cox

Natural Gas: N/A

Water: Arizona Water Company

Sewer Disposal: City of Coolidge, Public Works Dept

Waste: City of Coolidge, Public Works Dept

Schools:

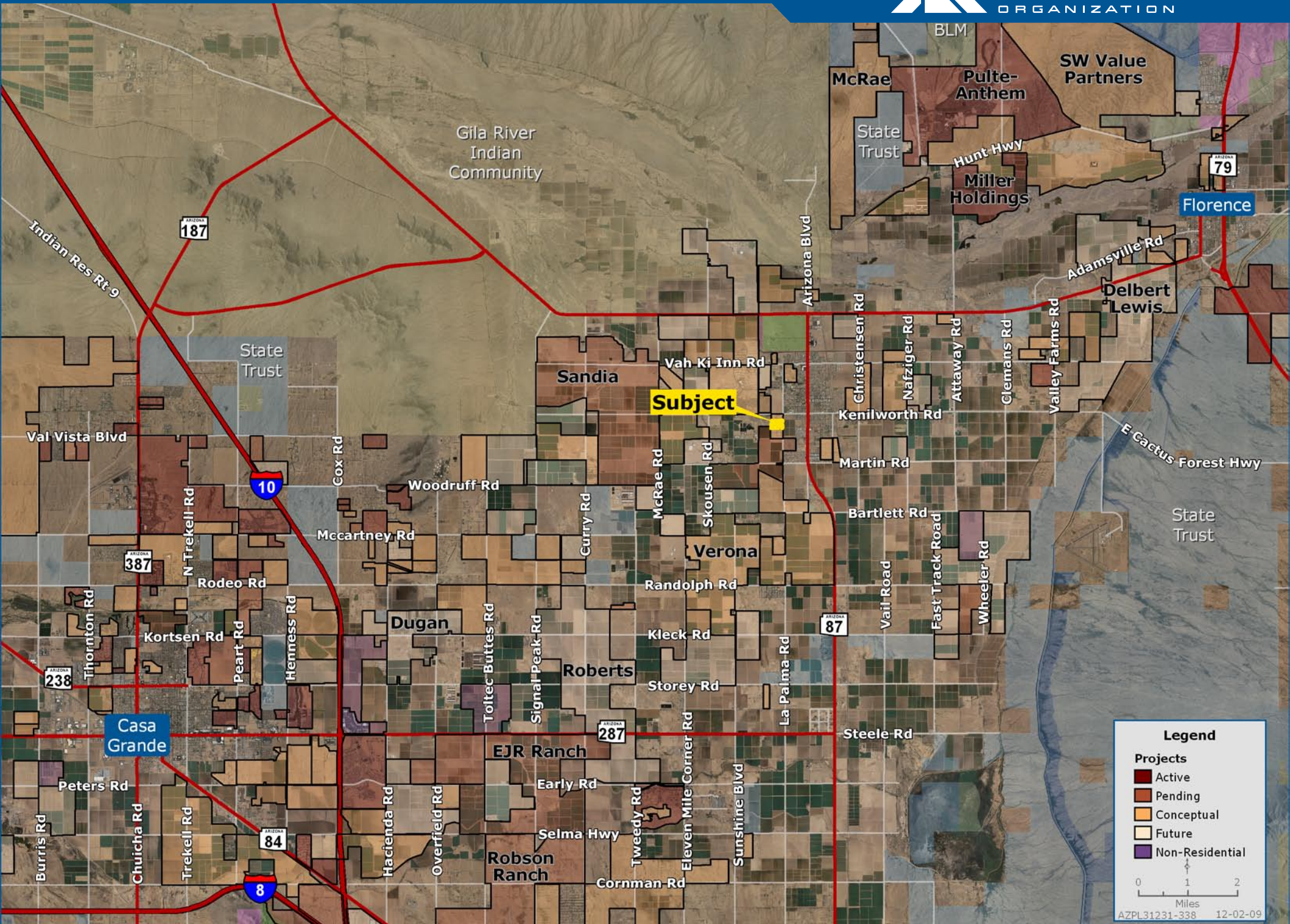
West Elementary - K-2nd

McCray Elementary - 3rd-5th

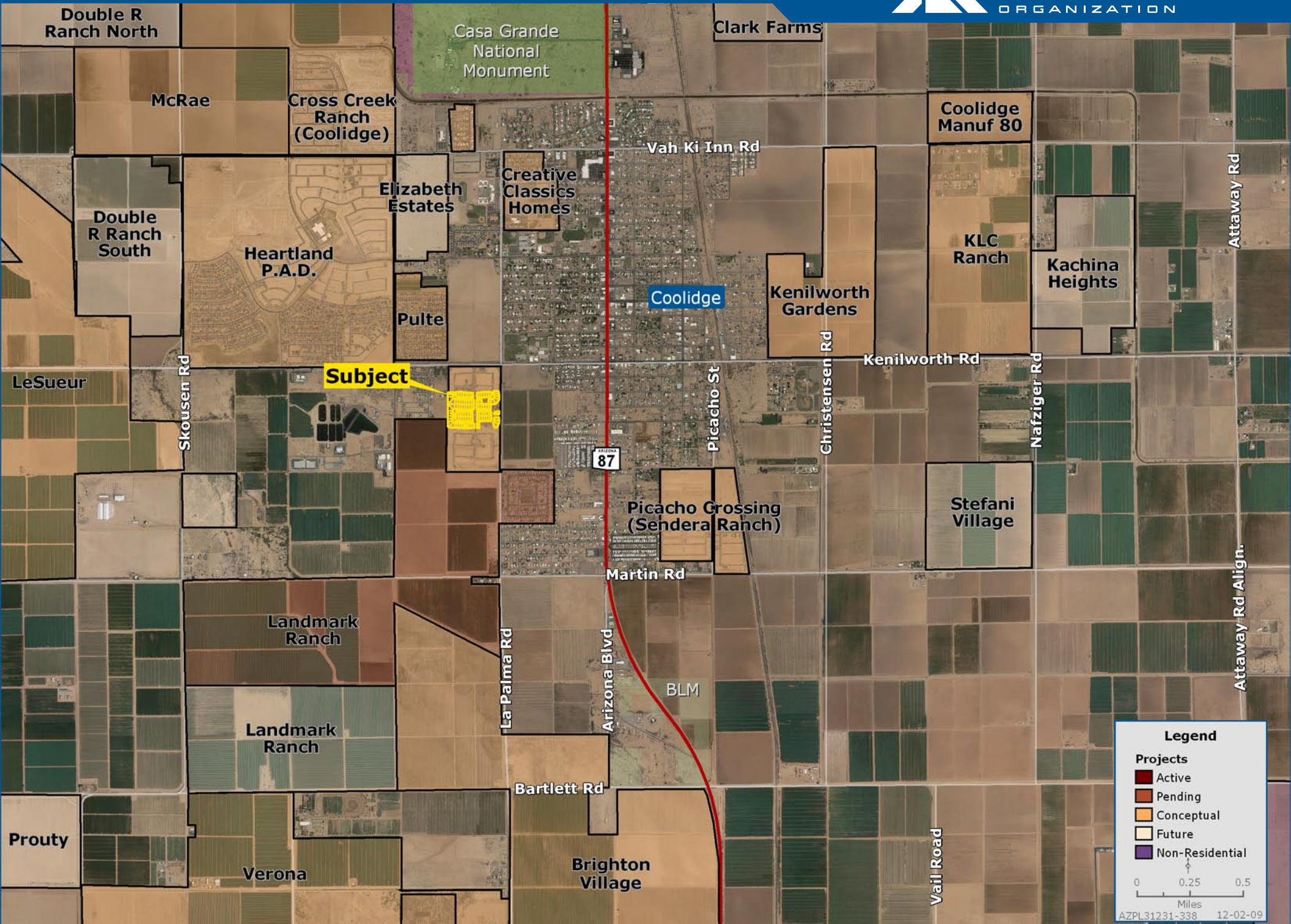
Hohokam Middle School - 6th-8th

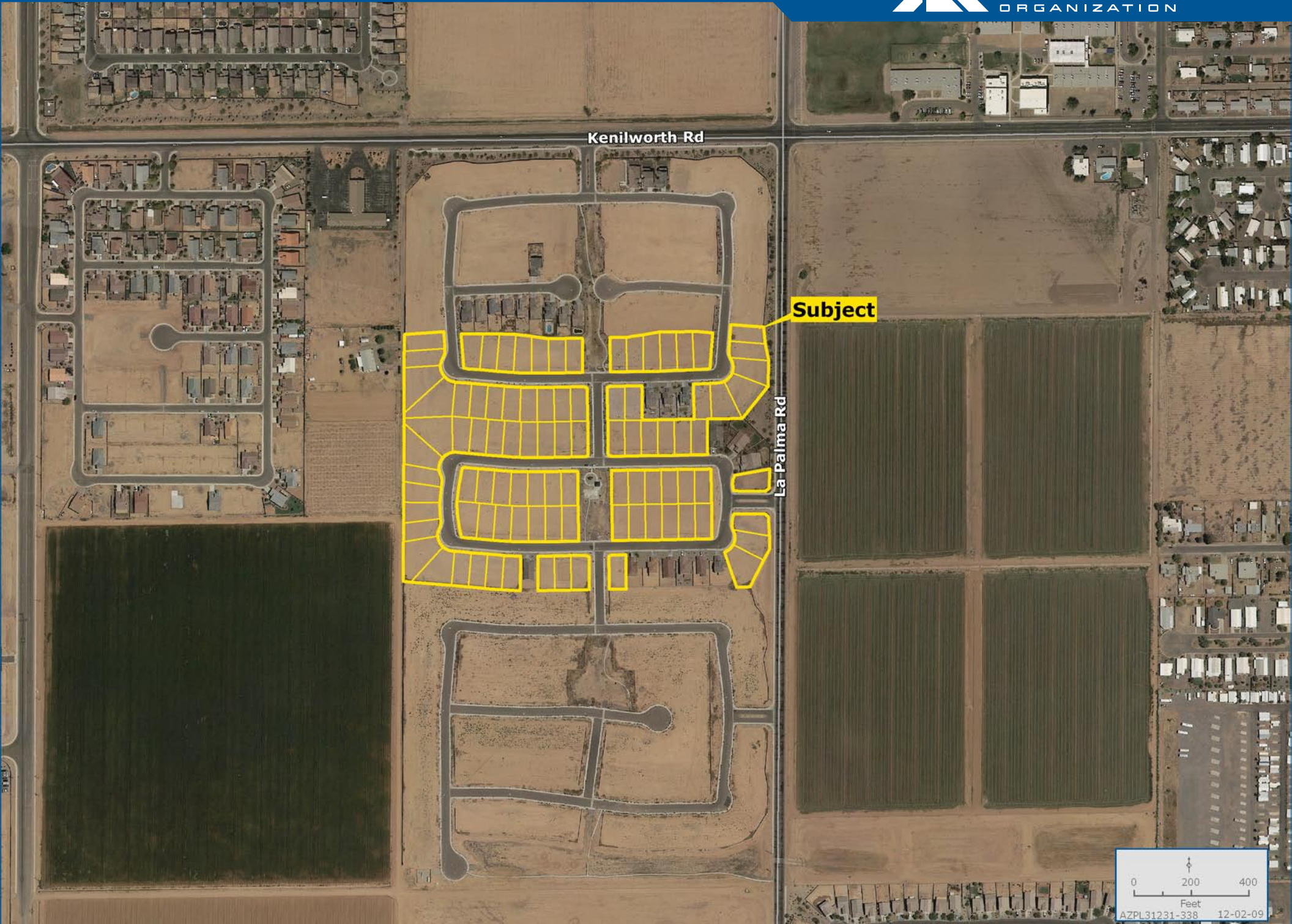
Coolidge High School - 9th-12th

Taxes: \$77.22 lot/year (2009)



Surrounding Development Map





SEC. 28 TN.5S RG.8E

SEE MAP 204-05_1

204-32_1

McCLELLAN MEADOWS

CAB F - SLD 175

THIS MAP IS FOR VALUATION PURPOSES ONLY.
THIS OFFICE WILL NOT ASSUME LIABILITY FOR
REPRESENTATION, MEASUREMENTS OR ACREAGE.
SURVEYS & SUBDIVISION PLATS ARE ON FILE
WITH THE PINAL COUNTY RECORDER'S OFFICE.

CANCELED PARCEL #
204-10-002A, 002B

TRACTS UNDER PARCEL #
204-32-325

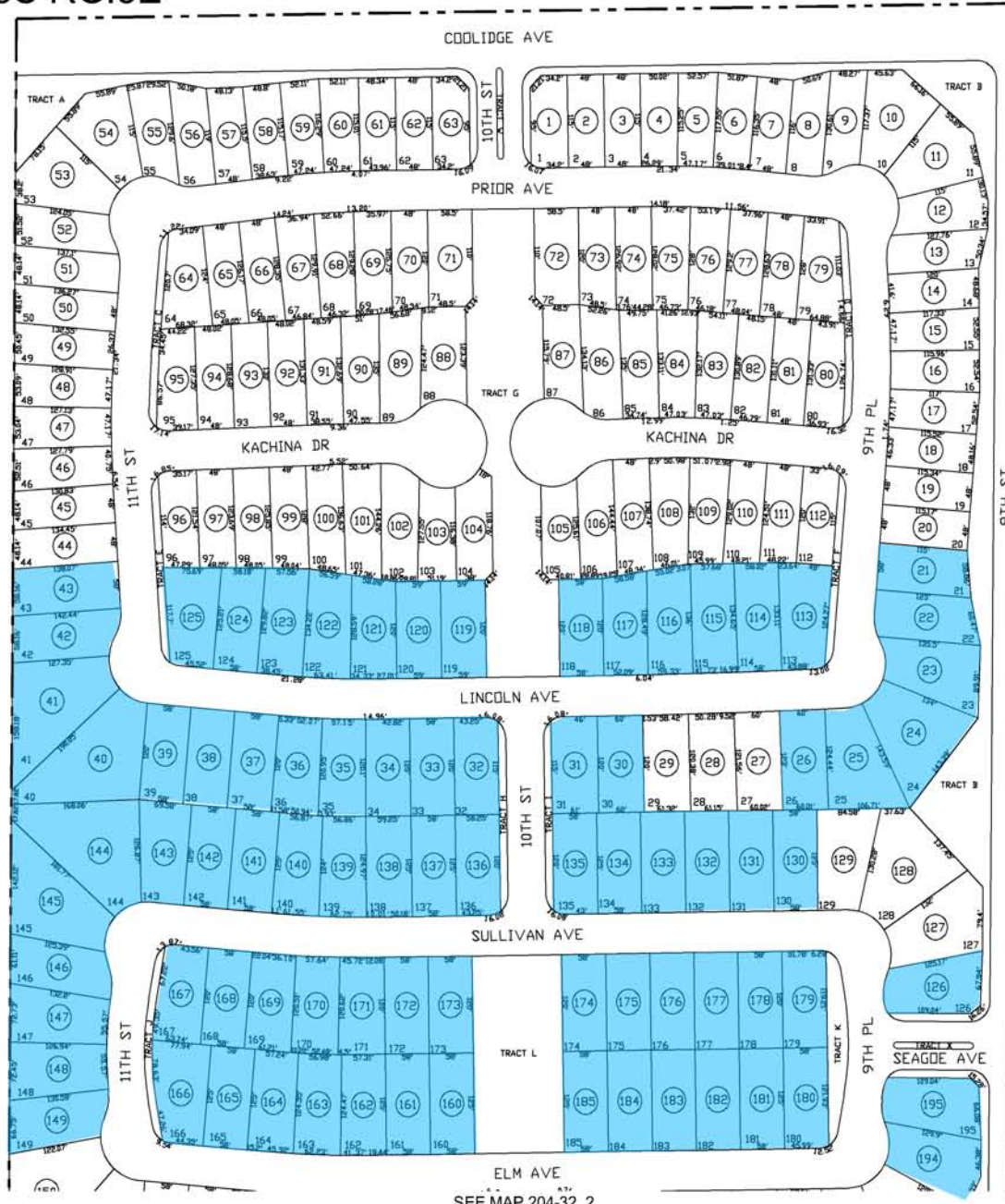


SCALE: 1" = 150'

6-18-2008
UPDATED BY CC

VICINITY MAP

6	5	4	3	2	1
7	8	9	10	11	12
18	17	16	15	14	13
19	20	21	22	23	24
30	29	28	27	26	25
31	32	33	34	35	36



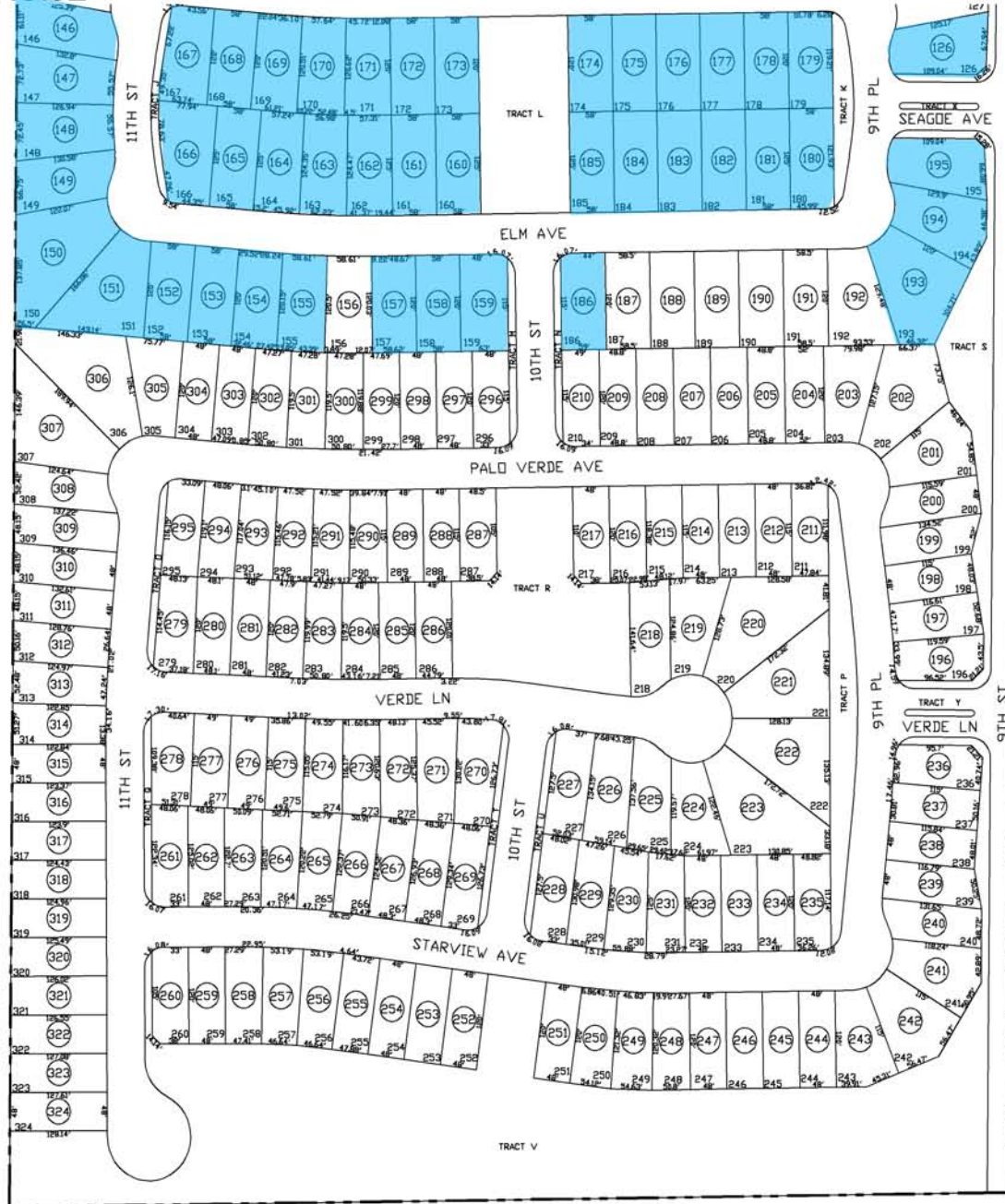
SEE MAP 204-36

SEE MAP 204-10

SEE MAP 204-32_2

SEC. 28 TN.5S RG.8E

SEE MAP 204-32_1



SEE MAP 204-10

SEE MAP 204-10

SEE MAP 204-10

204-32_2

McCLELLAN MEADOWS

CAB F - SLD 175

THIS MAP IS FOR VALUATION PURPOSES ONLY. THIS OFFICE WILL NOT ASSUME LIABILITY FOR REPRESENTATION, MEASUREMENTS OR ACREAGE. SURVEYS & SUBDIVISION PLATS ARE ON FILE WITH THE PINAL COUNTY RECORDER'S OFFICE.

CANCELED PARCEL #
204-10-002A, 002B

TRACTS UNDER PARCEL #
204-32-325



SCALE: 1" = 150'

6-18-2008
UPDATED BY CC

VICINITY MAP

6	5	4	3	2	1
7	8	9	10	11	12
18	17	16	15	14	13
19	20	21	22	23	24
30	29	28	27	26	25
31	32	33	34	35	36

Map labels: HWY 87 / 287, FLORENCE AVE, VAH KI INN RD, ASBOLINA RD, CHRISTENSEN RD, COOLIDGE AVE, KENILWORTH RD, MARTIN RD, BARTLETT RD, ATTAWAY RD.