

±60 ACRES FOR SALE

EXCLUSIVE LISTING | COOLIDGE, ARIZONA

LOCATION Northeast corner of Highway 87 & Randolph Road in Coolidge, Arizona

SIZE ±60 acres

PRICE Submit

PARCEL 401-21-013G

ZONING AG and I-2, City of Coolidge

TAXES \$2,704.40 (2015)

UTILITIES

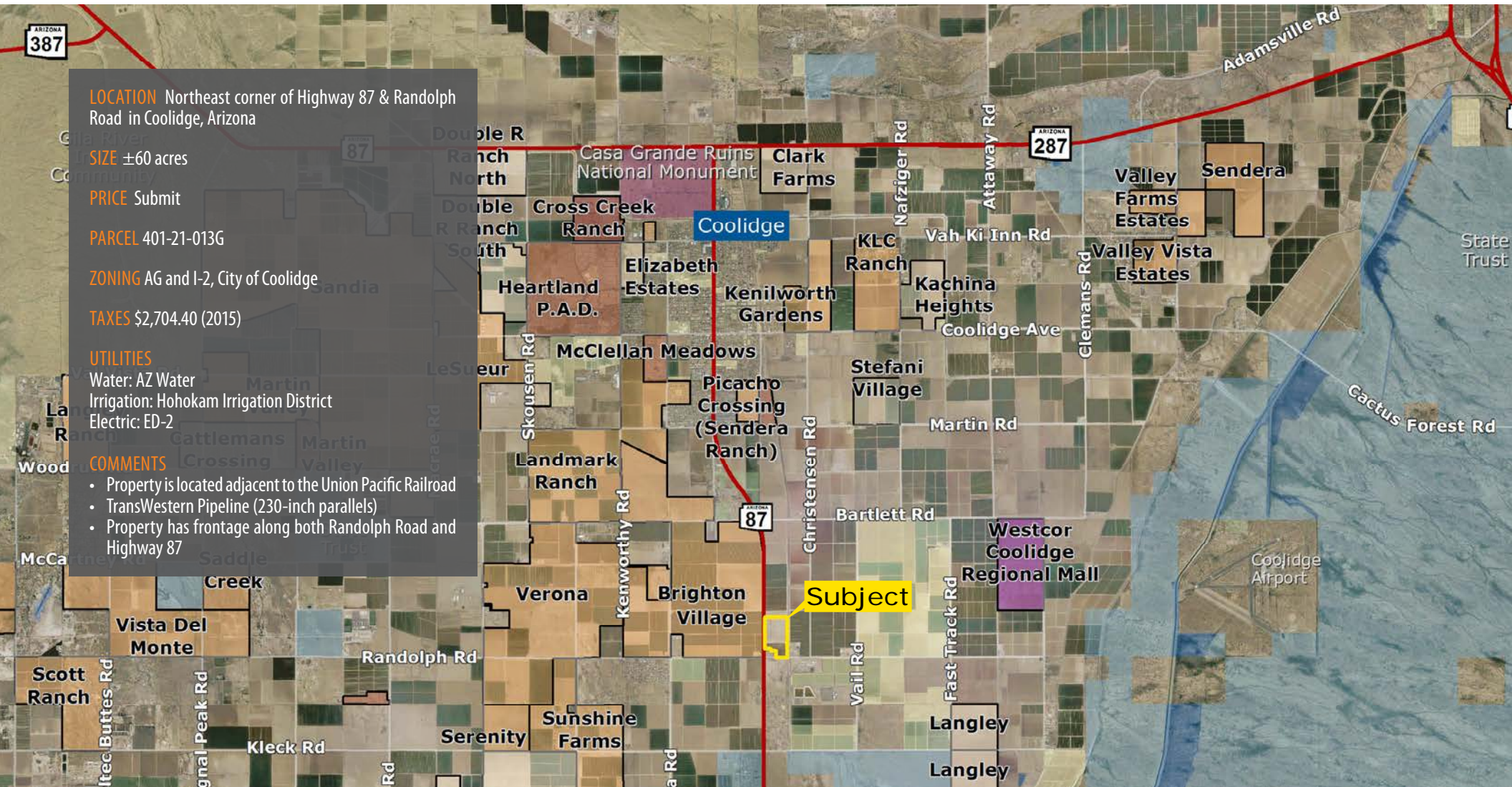
Water: AZ Water

Irrigation: Hohokam Irrigation District

Electric: ED-2

COMMENTS

- Property is located adjacent to the Union Pacific Railroad
- TransWestern Pipeline (230-inch parallels)
- Property has frontage along both Randolph Road and Highway 87

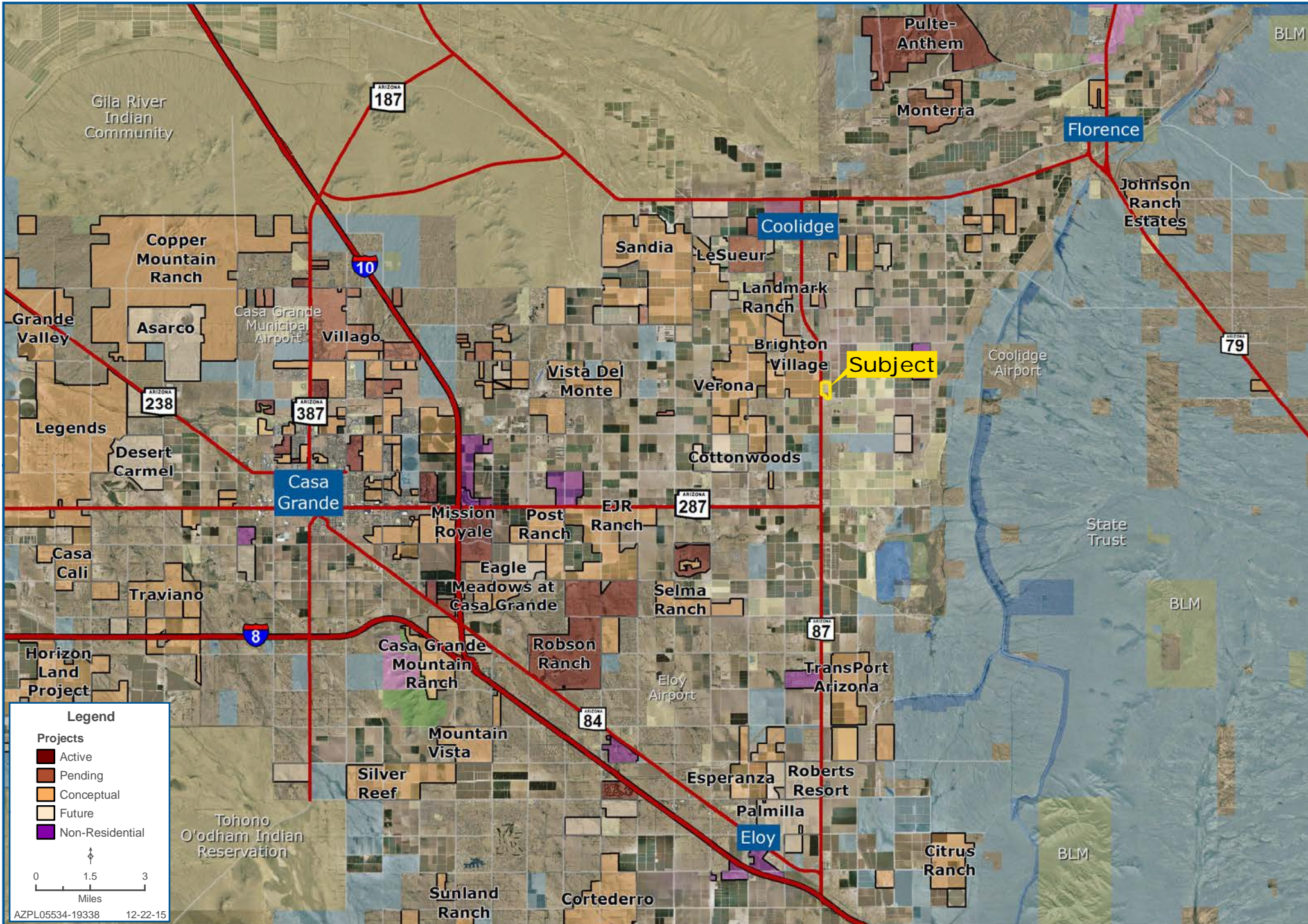


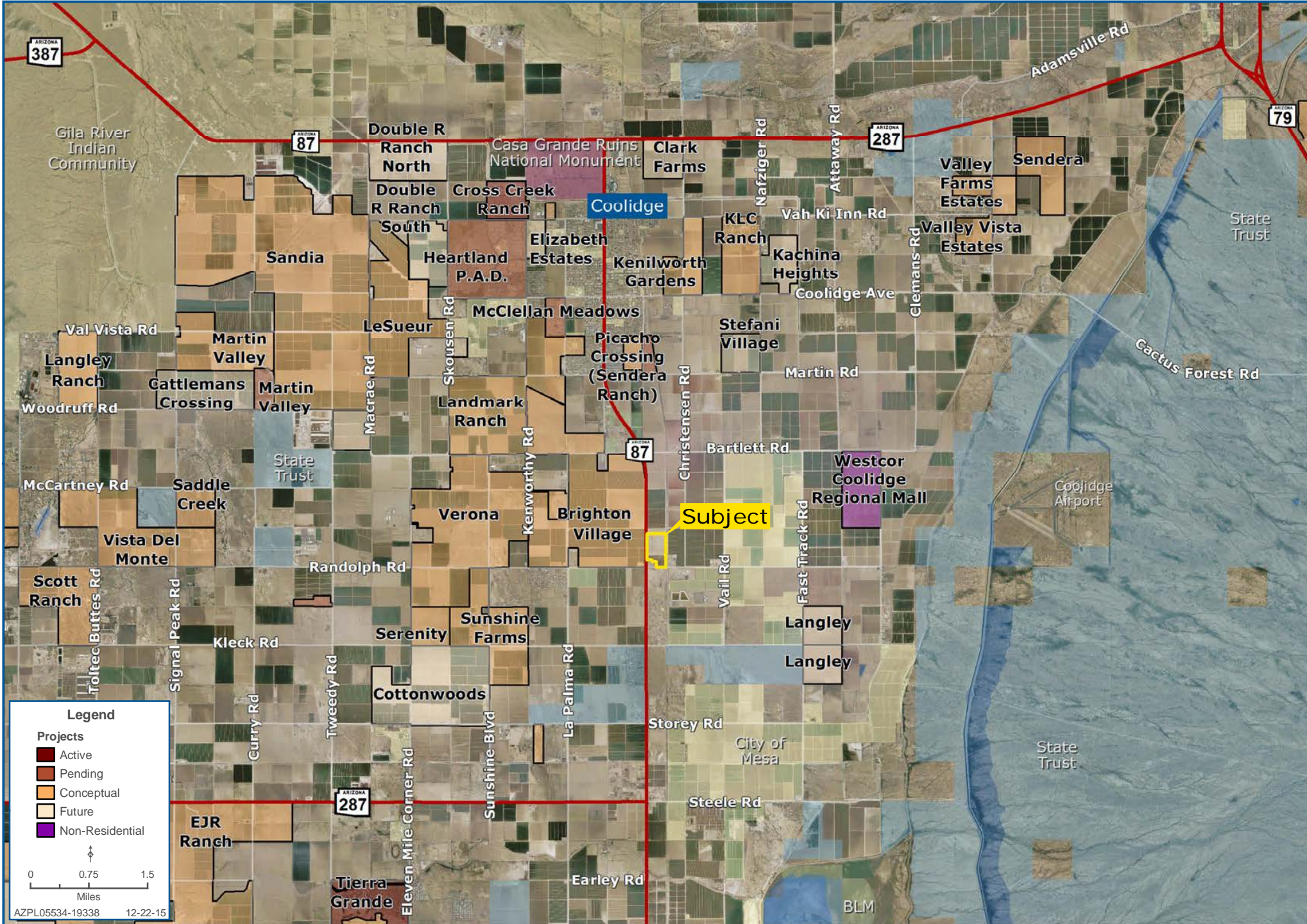
Kirk McCarville | kmccarville@landadvisors.com

4900 North Scottsdale Road, Suite 3000, Scottsdale, Arizona 85251 ph. 480.483.8100 | www.landadvisors.com

The information contained herein is from sources deemed reliable. We have no reason to doubt its accuracy but do not guarantee it. It is the responsibility of the person reviewing this information to independently verify it. This package is subject to change, prior sale or complete withdrawal. AZPL05534 - 2.29.16







Legend

Projects

- Active
- Pending
- Conceptual
- Future
- Non-Residential

0 0.75 1.5
Miles

AZPL05534-19338 12-22-15

